

# MASTER INVESTIGATIONS WITH FORENSIC PRECISION

Use Nuix Investigate® to make better-informed decisions and solve even the most complex cases faster than ever before.



Our powerful visualizations show you at a glance who is talking to whom, about what, and how often across several communication channels. Along with search capabilities and analysis tools built on top of our superior processing and indexing engine, Nuix Investigate helps corporations, government agencies, law enforcement, and service providers get faster, better-informed answers from their data.

## THE NUIX ADVANTAGE



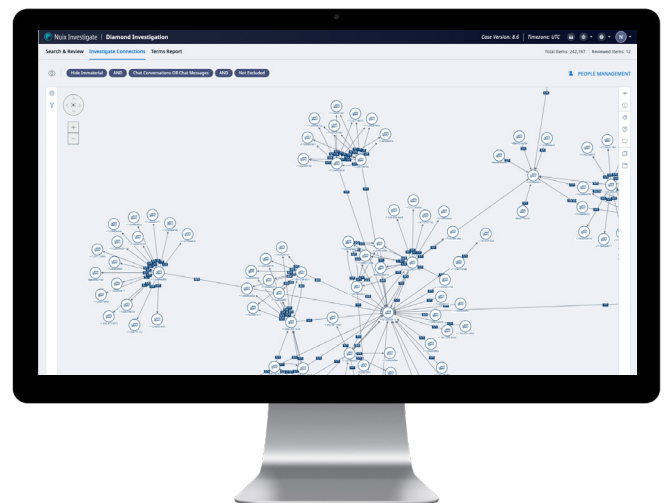
**See the big picture, faster.** Establish your case position sooner and identify the most influential suspects with a graphical analytical interface that shows who is talking to whom, what about, and how often—across many communication channels.



**Analyze any data for any workflow.** Culling massive amounts of case data is time-consuming and costly to outsource. Interrogate your case data as it processes for early data and case assessment.



**Collaborate and share, securely.** Enable investigators and other stakeholders to collaborate on case data and digital evidence. Protect sensitive information with role-based access to data sets and product features.



*Quickly reveal the key players of the matter and what they're talking about in the communications canvas visualization.*

## GET TO THE EVIDENCE FASTER

Nuix Investigate offers a simple, intuitive web interface where anyone can easily search, review, and tag data. It is quick to deploy without complex hardware configurations or client software.

## COLLABORATE WITH EASE

Allow internal and external contributors to analyze, review, and collaborate on digital evidence, and scale reviewers and hardware sources with ease.

## LOOK WHO'S TALKING

Laser-focus your communications visualizations with keyword searches or by zeroing in on the people who communicate most often, plus view the contents of attachments to build a layer of intelligence into the case.

## PROTECT YOUR MOST PRECIOUS INFORMATION

Integrate Nuix Investigate with Active Directory to enable single sign-on and two-factor authentication for more granular access security. Within the application, apply role-based permissions to item sets and specific product functions, ensuring reviewers only see the data and take the actions for which they are authorized.

## SEARCH AND FILTER ANY WAY YOU LIKE

Use fuzzy, proximity, and regular expression searches to identify terms of interest while minimizing false positives. Quickly pinpoint data with filters including file type, skin tone, media attributes, custodians, word lists, languages, and named entities.

## SEE THE CONTEXT

Rapidly navigate complex data sources such as email databases and file systems in a directory browser. Review text message and instant message conversations across multiple devices using a familiar chat view.

## GET THINGS DONE IN BULK

Conduct workflows and searches consistently across data sets, cases, locations, or systems. Apply nested search taxonomies to conduct complex search operations in a single pass.

## PROMOTE BETTER EDISCOVERY RESULTS

Conduct early assessment, in-place, then promote the relevant data directly and securely to Nuix Discover® for visual analysis and review.



Nuix ([www.nuix.com](http://www.nuix.com), [ASX:NLX](https://www.asx.com.au/ASX:NLX)) creates innovative software that empowers organizations to simply and quickly find the truth from any data in a digital world. We are a passionate and talented team, delighting our customers with software that transforms data into actionable intelligence and helps them overcome the challenges of litigation, investigation, governance, risk and compliance.

### APAC

Australia: +61 2 8320 9444

### EMEA

UK: +44 203 934 1600

### NORTH AMERICA

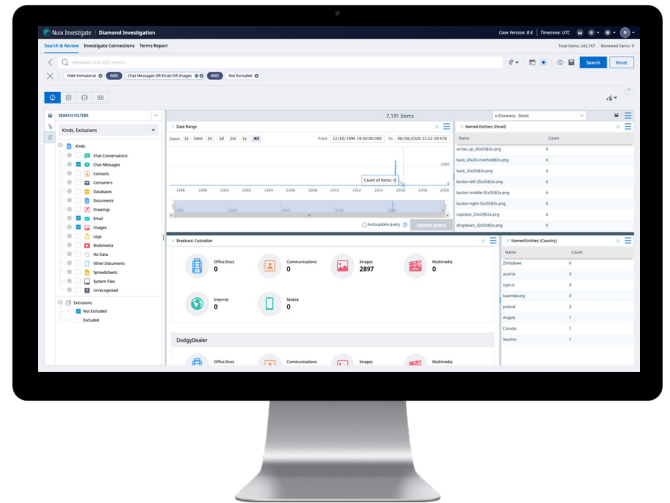
USA: +1 877 470 6849

Nuix (and any other Nuix trademarks used) are trademarks of Nuix Ltd. and/or its subsidiaries, as applicable. All other brand and product names are trademarks of their respective holders. Any use of Nuix trademarks requires prior written approval from the Nuix Legal Department. The Nuix Legal Department can be reached by e-mail at [Legal@nuix.com](mailto:Legal@nuix.com).

THIS MATERIAL IS COMPRISED OF INTELLECTUAL PROPERTY OWNED BY NUIX LTD. AND ITS SUBSIDIARIES ("NUIX"), INCLUDING COPYRIGHTABLE SUBJECT MATTER THAT HAS BEEN NOTICED AS SUCH AND/OR REGISTERED WITH THE UNITED STATES COPYRIGHT OFFICE. ANY REPRODUCTION, DISTRIBUTION, TRANSMISSION, ADAPTATION, PUBLIC DISPLAY OR PUBLIC PERFORMANCE OF THE INTELLECTUAL PROPERTY (OTHER THAN FOR PREAPPROVED INTERNAL PURPOSES) REQUIRES PRIOR WRITTEN APPROVAL FROM NUIX.

## DEPLOY IN THE CLOUD

Deploy Nuix Investigate in cloud and virtual server environments, allocating resources to cases and adjusting them as your needs evolve.



*Use multiple visualizations to drill into the data and highlight relevant facts fast.*

## BUILD AN INVESTIGATIVE LAB

Nuix Investigate is a key element of Nuix's Investigations Lab, which enables investigative teams of any size to work more efficiently, no matter how big or small the case is, and correlate intelligence across multiple evidence sources. The Nuix Lab also includes:

- **The Nuix Engine**, which processes structured, semi-structured, and unstructured data with unmatched speed and precision, making it available for analysis and correlation.
- **Nuix Workstation**, a powerful desktop application built on top of the Nuix Engine for processing, searching, analyzing, and exporting any volume of data.

**Save time, increase productivity,  
and empower collaboration.**

[www.nuix.com/demo](http://www.nuix.com/demo)